



dotDefender for Apache

Installation Guide



Installation Process

The installation guide contains the following sections:

- [System Requirements](#)
- [Installing dotDefender](#)
- [Troubleshooting](#)

System Requirements

dotDefender operation requires the following:

- Web Server: Apache 1.3.21 or higher, Apache 2.0.42 or higher, Apache 2.2.X
- Platform: Linux (packages: rpm, Debian, Generic) , Solaris 8/9/10-SPARC, Solaris 10-X86, FreeBSD-X86 (6.1 or higher)
- Perl Interpreter
- GLIBC 2.3.2 or higher

Installing dotDefender

1. Open your browser and navigate to www.applifecycle.com. You are prompted to download a 30-day evaluation version. You can continue to use the trial version for up to 30 days and then purchase a license.



dotDefender

Web Application Firewall protects your websites and internal applications from defacement and hacker attacks, including SQL Injection, Session Hijacking and Cross-Site-Scripting.

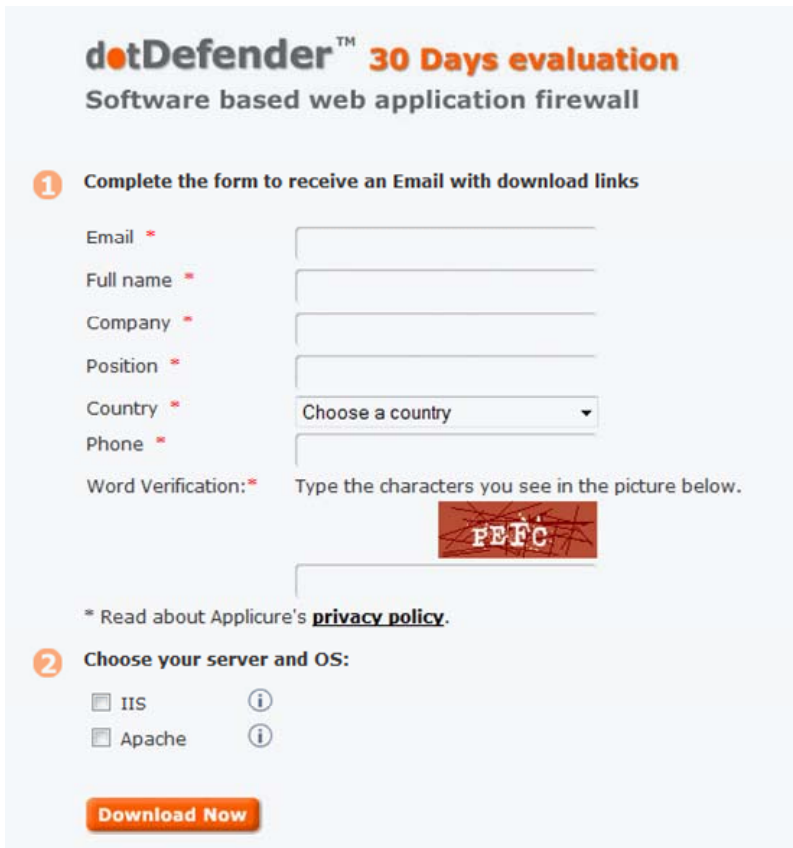
[30 Day Free Trial](#)

[Read more »](#)



AppliCure
dotDefender
OUT-OF-THE-BOX
WEBSITE SECURITY MADE SIMPLE
dotDefender
BLOCK & PREVENT WEBSITE
FROM WEB APPLICATION ATTACKS
www.applifecycle.com

2. Click **30 Days Evaluation**. You are prompted to provide your details, including your name, email address, server type, and operating system.



The screenshot shows a web form for a 30-day evaluation of dotDefender, a software-based web application firewall. The form is divided into two main sections. Section 1, titled 'Complete the form to receive an Email with download links', contains several input fields: 'Email', 'Full name', 'Company', 'Position', 'Country' (a dropdown menu with 'Choose a country' selected), 'Phone', and 'Word Verification' (a CAPTCHA image showing the characters 'FEFC'). A link to the privacy policy is provided below the CAPTCHA. Section 2, titled 'Choose your server and OS:', has two radio button options: 'IIS' and 'Apache', each with an information icon. A 'Download Now' button is located at the bottom of the form.

3. Select Apache and the type of installation file from the selection list.

4. Click Download Now. You are prompted to check your email for download instructions.

5. Follow the email instructions.

6. Download the installation file using the provided URL.

7. Extract the downloaded gz file.

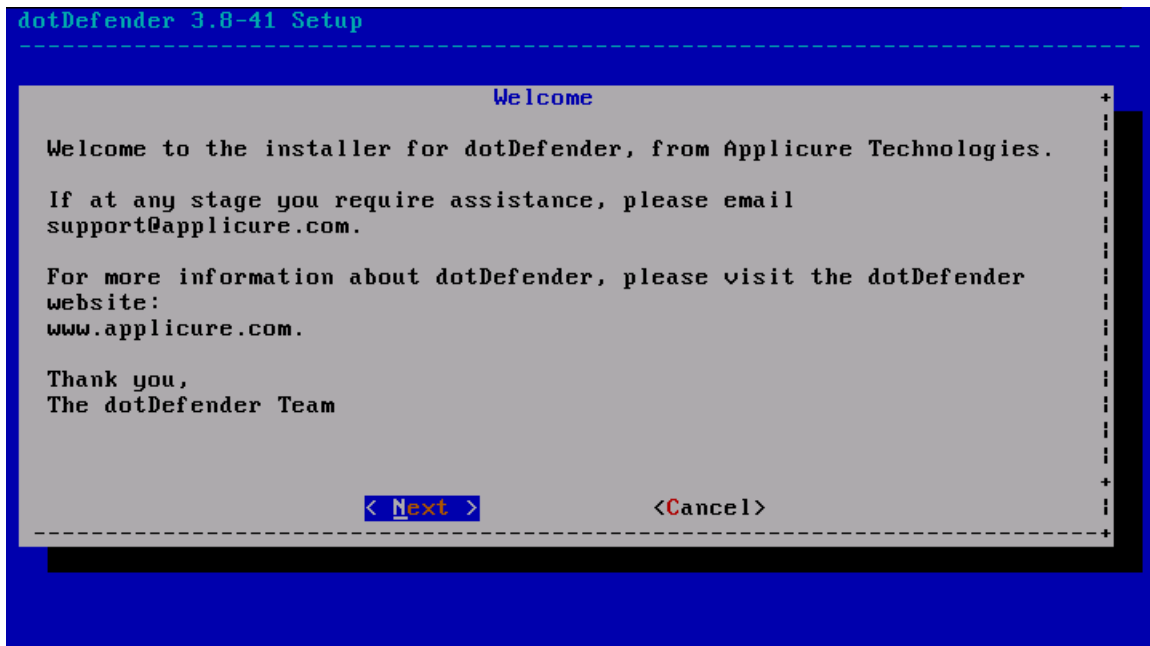
For example: **gunzip dotDefender-3.8-41.Linux.i386.rpm.bin.gz**

Note: Installation must be performed using root permissions

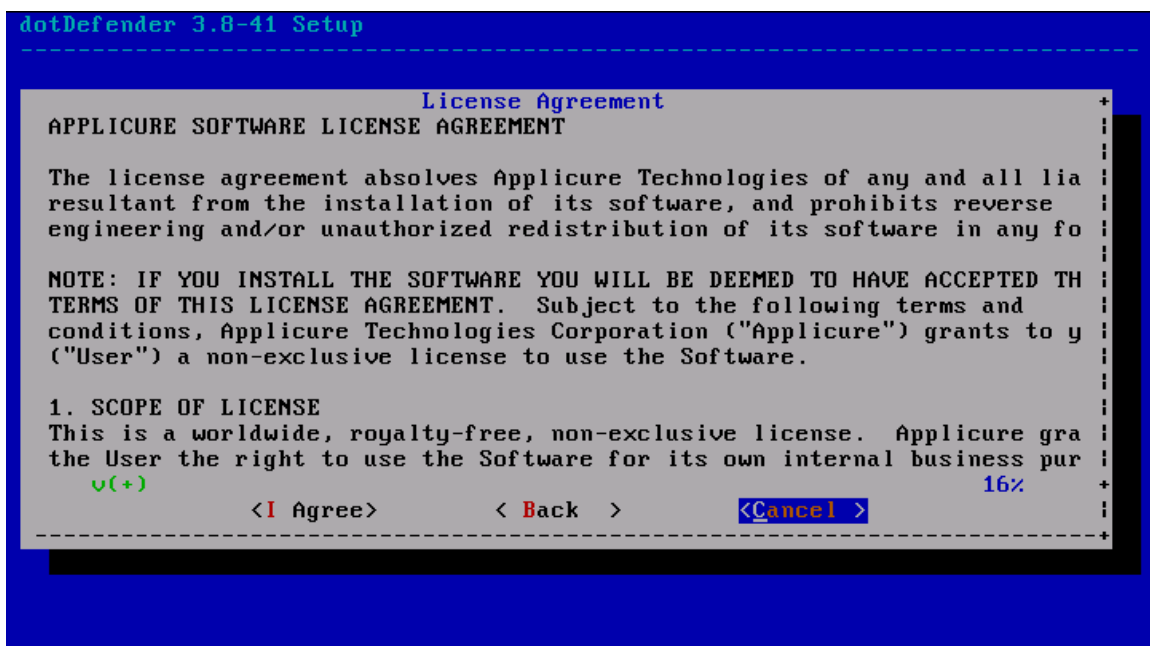
8. Start the installation dialog by executing the bin file.

For example: **sh ./dotDefender-3.8-41.Linux.i386.rpm.bin**

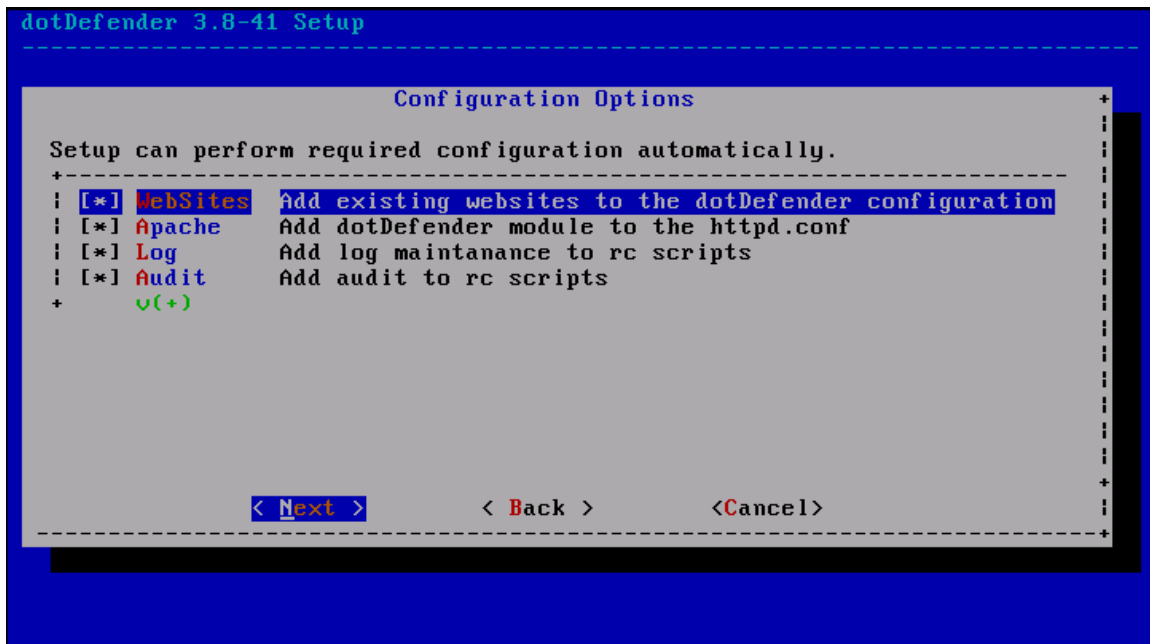
9. The Welcome screen appears. Select Next.



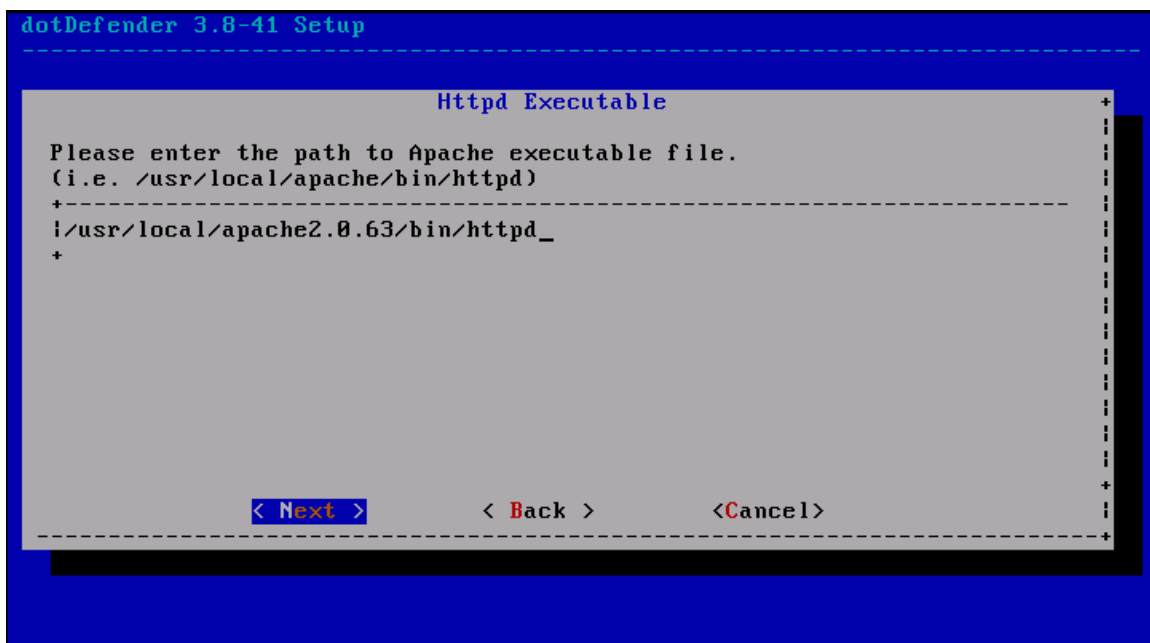
10. The License Agreement window appears.



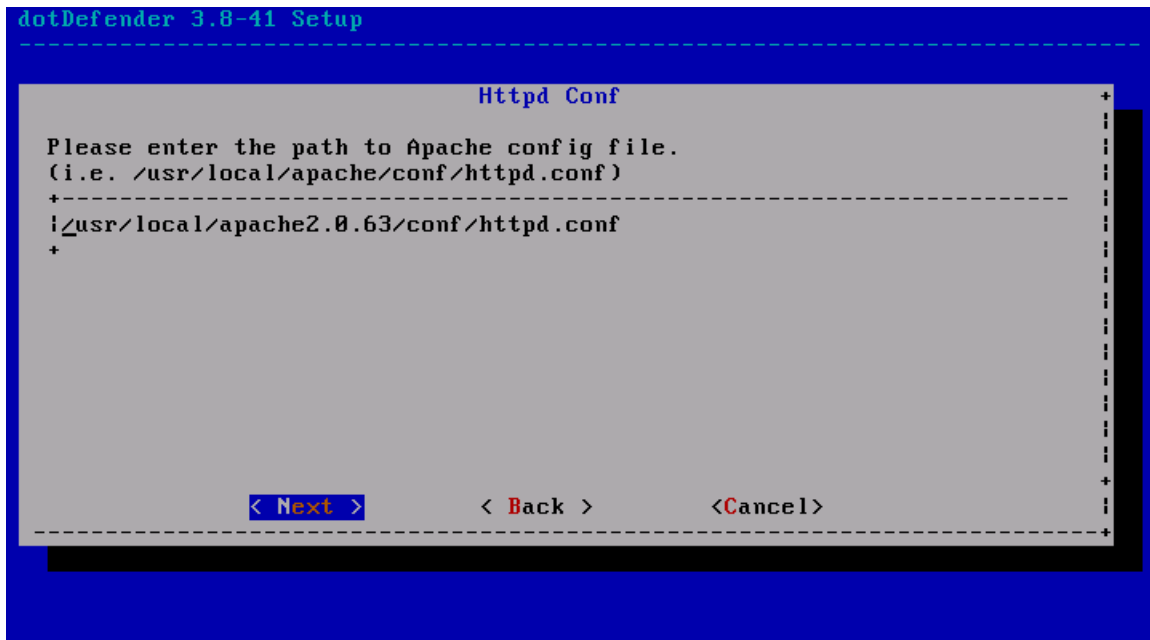
11. Read the license and select **I Agree**. Click **Next**. The Configuration Options window appears.



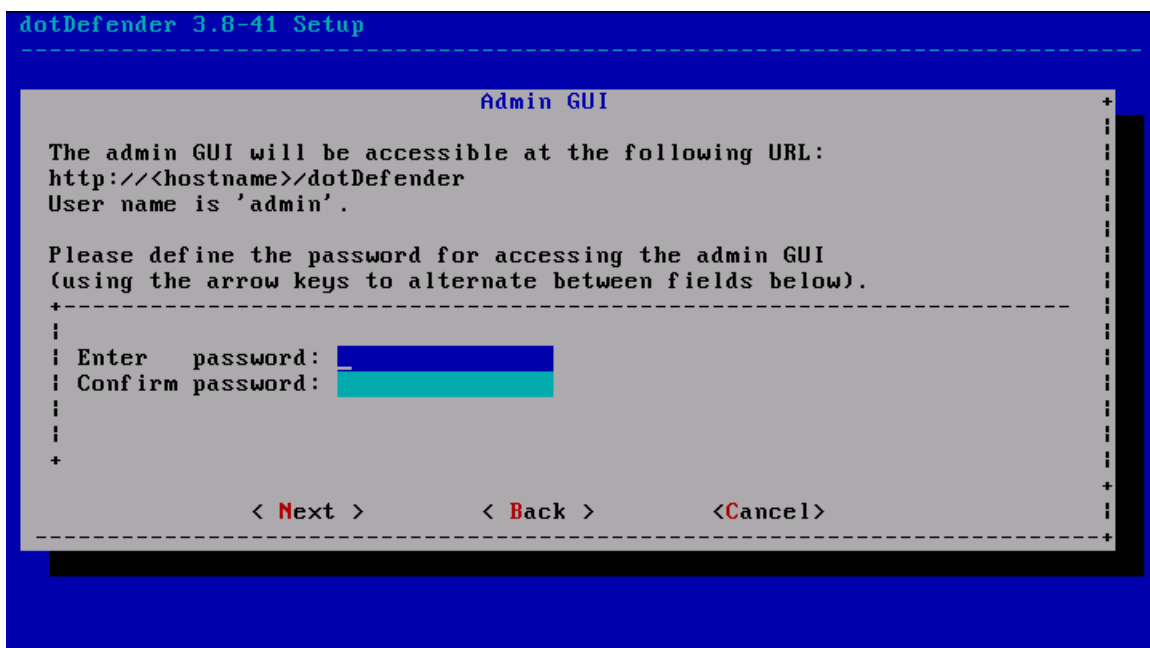
12. Select **Next**. The Httpd Executable window appears.



13. Type the path to the httpd executable and select **Next**. The Httpd Conf window appears.



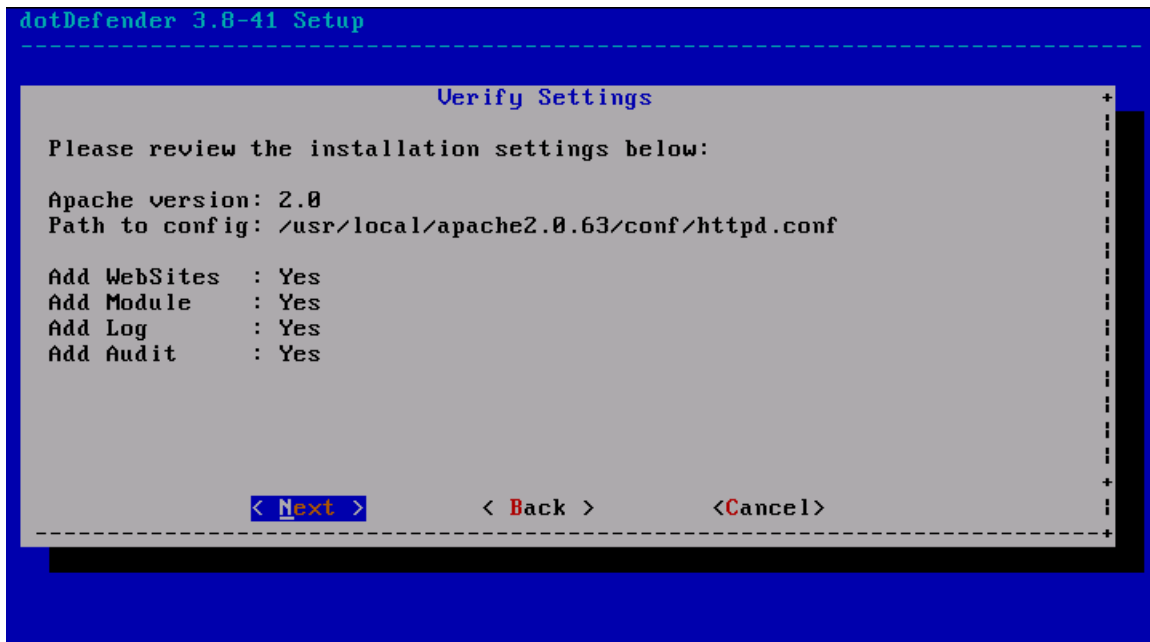
14. The httpd.conf path is inserted automatically. Select **Next** or modify the path if Apache is configured to use a file other than the default configuration file. The Admin GUI window appears.



15. dotDefender Administration GUI is accessible at <http://<hostname>/dotDefender>

To access the Administration GUI, a password must be configured for the admin user. Enter a password in each of the two fields. Select **Next**.

The Verify Settings window appears.



16. Review the settings and select **Next**. The Confirm Installation window appears.



17. Select Go to start installation.

18. When installation completes, the Setup Complete window appears. **Restart Apache**.

```
dotDefender 3.8-41 Setup
-----
                          Setup Complete

dotDefender has been successfully installed.

Please restart your Web server at this time.

To activate dotDefender, launch the admin GUI
and click 'Start dotDefender'.
[GUI URL: http://<hostname>/dotDefender]
[user name: 'admin']
[password: <defined previously>]
```

19. After restarting Apache, to activate dotDefender, launch the administration GUI at the following URL: `http://<hostname>/dotDefender/`, install the license and click **Start dotDefender**.

Notes:

1. After first License installation, it is required to Restart Apache
2. If a license is not installed, dotDefender will be set to Monitoring Mode.

Troubleshooting

■ When logging into the dotDefender Admin GUI, the page does not display and an internal server error appears.

Cause: This issue may occur when suEXEC is applied on the server.

Solution: Use the **suexec.sh** script found in the directory: **/usr/local/APPCure/integration/**. The script creates a directory under the DocumentRoot of a specified site. This directory will include files and links to the dotDefender GUI directory.

1. Execute the script in the following format:

```
sh ./suexec.sh web_interface_dir suexec_user suexec_group
```

web_interface_dir – path to directory to be created by script under DocumentRoot of one of the sites configured in the apache web server.

suexec_user - the user configured under SuexecUserGroup directive which belongs to the defined site .

suexec_group - the group configured under SuexecUserGroup directive that belongs to the defined site.

Example: If DocumentRoot=/var/www/html/ and SuexecUserGroup is www www

The script could be executed as follows:

```
sh ./suexec.sh /var/www/html/dDAdmin/ www www
```

2. Copy the content of the dotDefender.conf file (Which will be created in *web_interface_dir*) to your Apache configuration file (httpd.conf), and restart Apache. If you are not sure where in the Apache configuration file to add the content, simply add it to the end of the file.

Now you can manage dotDefender through **http://site/web_interface_dir**

It is strongly recommended to limit the access to this directory to specific IP addresses and secure it with a password through apache directives (AuthName, AuthType, Allow from).

■ When attempting to login to the dotDefender Admin GUI, after authentication, a "404 Not Found" error appears.

Cause: This issue may occur if the configuration of Apache was set to deny adding a trailing slash and/or recognizing index.html as a default web page (DirectoryIndex and DirectorySlash in Apache configuration file)

Solution: When accessing the dotDefender Admin GUI, type the full path:

<http://www.somedomain.com/dotDefender/index.html>



For additional information, please visit the Applicure support website at:
<http://applicure.helpserve.com/>